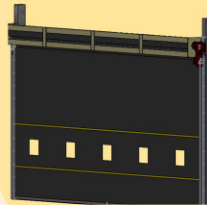
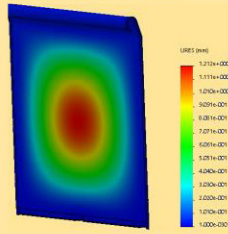
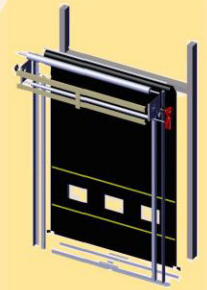


GARAGE AND INDUSTRIAL DOORS

# MAX-ROLL DOORS

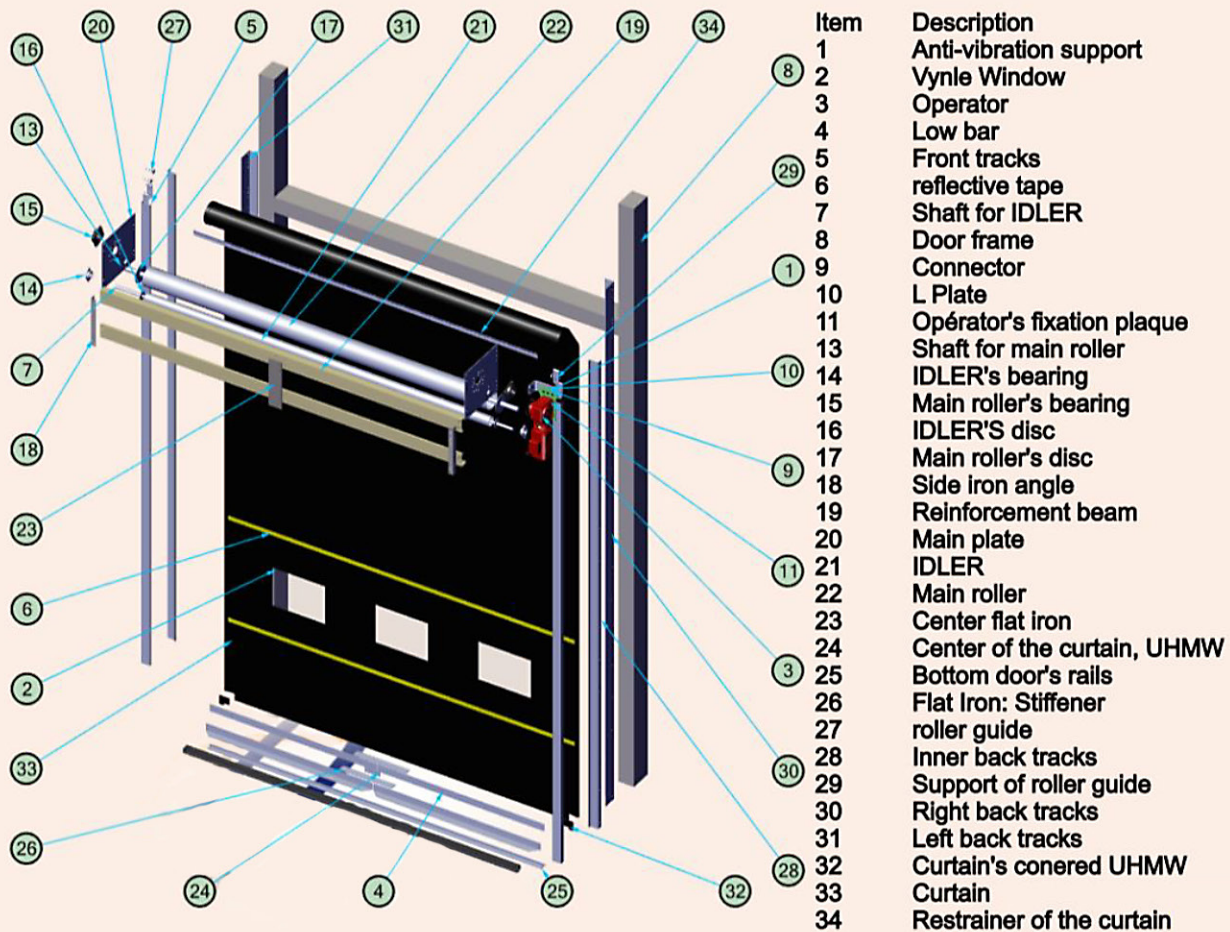
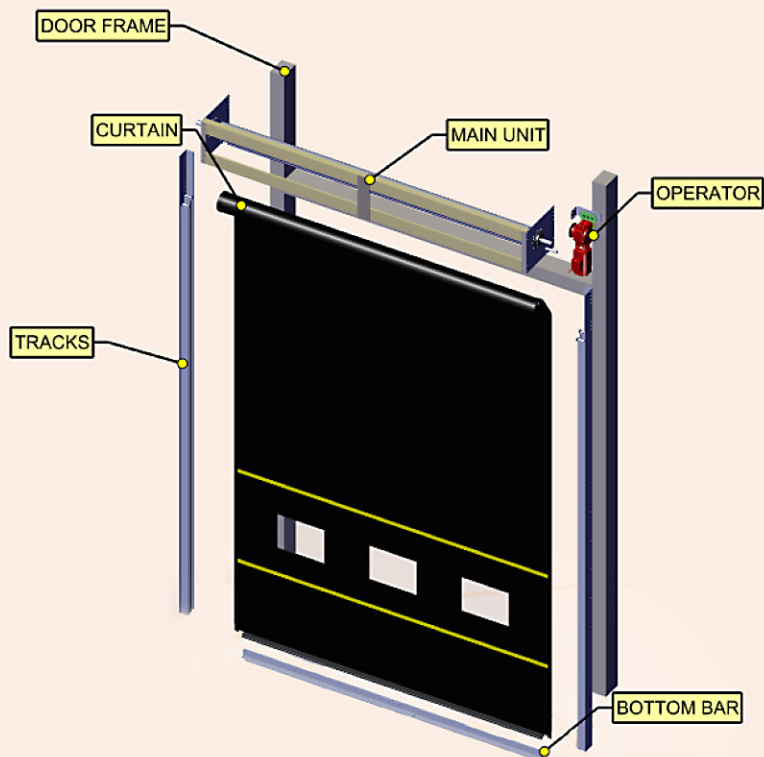
TECHNICAL DATA



**DEVANCO**  **CANADA**

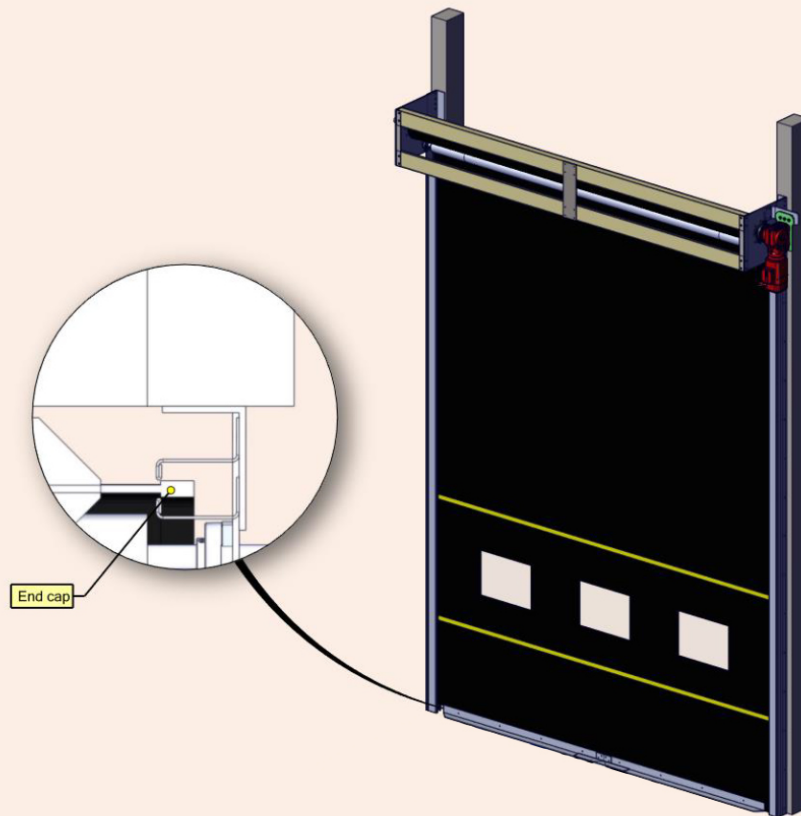
 855-931-3334

 [DevancoCanada.com](http://DevancoCanada.com)



## MAX-ROLL DOORS

The MAX-ROLL roll-up doors are innovative, safe, durable and easy to maintain. It is unlike anything else on the market, in many aspects, including its great robustness and simplicity. Its opening and closing mechanism is remarkably well-suited to fast-action doors. Not to mention its endcap system, which ensures high stability in hostile environments. The MAX-ROLL doors are adapted to the needs of the market, and consequently to the needs of a wide range of customers. In fact, IDMAX makes every effort to involve the customer in the development process. The MAX-ROLL roll-up door features a pneumatic safety system to reverse operation in the event of an obstruction. It should also be noted that the MAX-ROLL are doors equipped with photoelectric sensors that open the door when a passing object is detected during a closing operation. As a result, the safety system makes it impossible for vehicles to close the door. And, finally, this door can cover a gigantic surface area of 2000  $ft^2$  with ease

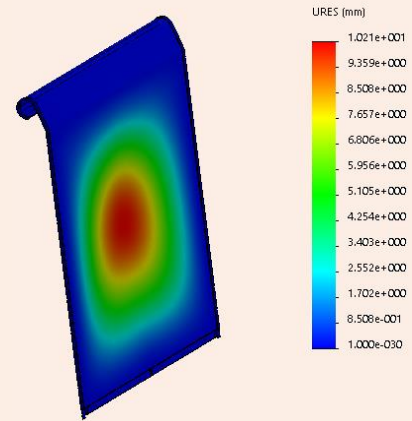


### MAX-ROLL DOORS:

- are innovative and durable;
- are robust and safe;
- are easy to maintain and economical;
- offer an agile mechanism and operate at high speed;
- offer thermal and acoustic insulation;

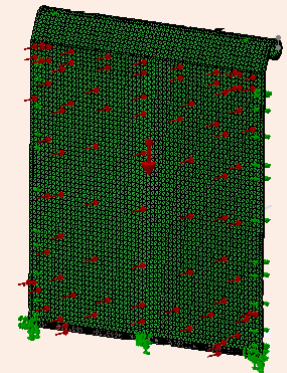
## The curtain

MAX-ROLL doors feature direct curtain winding on the drive roller. The flexible curtain is black (optional blue or gray), capable of operating in temperatures between -20 F° and 180 F° and up to 1,000,000 cycles and more thanks to its springless design. The ends of the curtain are fitted with an end cap system featuring a 12 mm internal and external extra thickness, and covered with a sturdy anti-friction membrane. The curtain's stability under the action of wind is calculated using finite element simulation, and verified up to approx. 0.96 kPa (20 lb / ft<sup>2</sup>). Windbars are used on an as-needed basis as curtain reinforcements in locations with severe weather conditions and/or high wind loads. Their use enables the door to withstand loads of around 2 kPa and more.



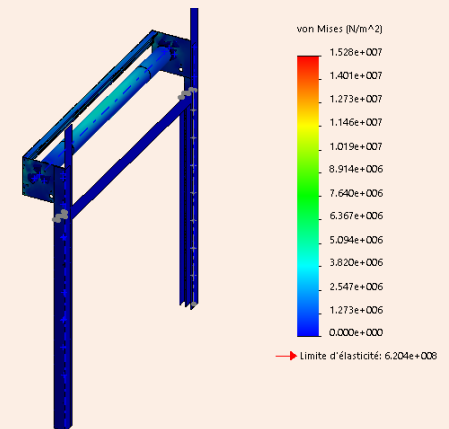
### Technical details:

- Polyester fabric covered with "RAVEL" SBR rubber;
- Tensile strength: approx. 13.79 Mpa;
- Collision bending strength: approx. 20.6 MPa;
- Tensile strength, longitudinal direction: approx. 10 Mpa;
- Tensile strength, lateral direction: approx. 15 Mpa,
- Weight 4882.43 gr / m<sup>2</sup> (1.5 lb / ft<sup>2</sup>).
- Hardness : 70 +/-5
- Thickness : 6 mm (1/4 in);
- Shock absorption and shape memory;
- Flame-retardant (on request), MSHA specification;



## The structure

The MAX-ROLL rapid-action door structure is self-supporting, made from quality materials and state-of-the-art components (steel sections, angles and plates: in compliance with CAN/CSA-G40.20/ G40.21-13). The use of high-strength steel is a guarantee of high stability and safety, as is the use of galvanized steel for corrosion-resistant connection elements. Last but not least, the use of composite materials for the door leaf ensures low weight and particularly high abrasion resistance.



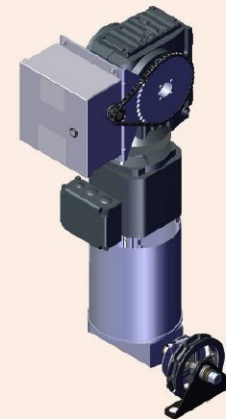
### Main components and characteristics:

|                            |  |
|----------------------------|--|
| Drive roller (Main roller) | Steel main unit with welded discs for improved strength. With a deflection in the horizontal plane of less than 1/240 of the door width.   |
| Alignment roller (IDLER)   | Made of steel with welded discs for improved strength, allowing the deck to be optimally guided to the side guides by the guide rollers.   |
| Tracks                     | Hot-rolled and bend-formed heavy-duty steel side guides to minimize deck wear and ensure smooth guidance of the side end system. This design eliminates the need for PVC. What's more, they are equipped with a safety device that hinges an infra-red barrier consisting of receiver-transmitters positioned inside the guide rails, each facing the other. |

|                           |  |
|---------------------------|--|
| Bottom crossbar           | Pre-painted steel for extra deck rigidity. Manufactured in two centrally articulated parts. These crosspieces are fitted with a pneumatic safety system for reversing movement. And, as an option, they can be fitted with a mechanical fuse and "COLLISION DETECTOR" collision protection system. |
| Curtain                   | Polyester composite with 2 black "RAVEL" SBR rubber inner and outer faces. (Grey, blue and MSHA specification optional).   |
| Direct drive motorisation | Direct drive to door shaft. "DIRECT DRIVE. Includes a braking system designed to take on the full weight and dynamics of the door in the event of a fall. Mechanism Conforms to CAN/CSA : C22.2 N° 100.  |
| Safety devices            | Safety systems for reversing movement in the presence of an obstacle. Two detection systems: pneumatic and infra-red, which prevent the door from closing when an object or obstacle is detected.  |

## Operators

The electric operators we offer are perfectly suited to accompany our MAX-ROLL doors. These three-phase devices are "direct drive", i.e. they connect directly to the door shaft. MAX-ROLL operators are high-performance units designed for intensive, high-speed use. For example, they can reach a rotation speed of 1681 rpm and a power rating of 4.1 KW. These motors are of the "INVERTER-DUTY" type. In fact, drive systems have been introduced to enable optimum control and regulation of frequency variations. MAX-ROLL operators are fitted with a brake for high-frequency operation with minimum maintenance. And last but not least, they are equipped with a chain hoist with power supply switch, offering additional safety in emergencies.



## Programmable control panels

An electronic control system specially designed for MAX-ROLL doors enables the mechanism to be engaged in complete safety, and can also offer the following features :

- Self-diagnosis of the door's electrical system and components;
- Digital display of current functions;
- Variable speed frive for smooth acceleration and stopping

## The warranty

IDMAX does everything in its power to satisfy and provide quality customer service. IDMAX guarantees that its products are free from defects in materials and workmanship under normal conditions of use..

- 25-year limited curtain warranty..
- 2-year limited warranty on mechanical and electrical components

| Principales Caractéristiques                           | Performances |
|--|--------------|
| Water resistance                                       | TBD*         |
| Release of hazardous substances                        | N/A*         |
| Resistance to wind load                                | 1 kPa        |
| Thermal resistance                                     | Verified     |
| Air-proof  | Verified     |
| Safe opening   | Verified     |
| Mechanical strength and stability                      | Verified     |
| Operating effort                                       | Verified     |
| (*) TBD : To be determined<br>(*) N/A : Non applicable |              |